

# Knowledge Organiser

## Year 2

By the end of Year 3:

- To be able to name and locate the world's 7 continents and 5 oceans
- To identify human and physical features
- To know about the frozen areas on our planet



Map of the UK

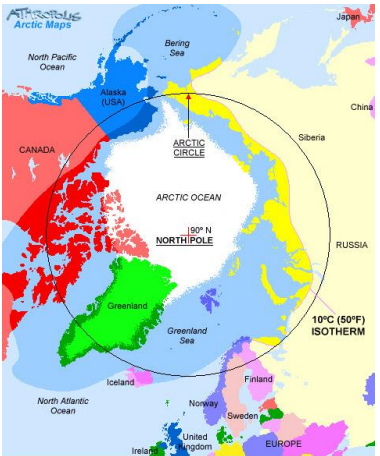
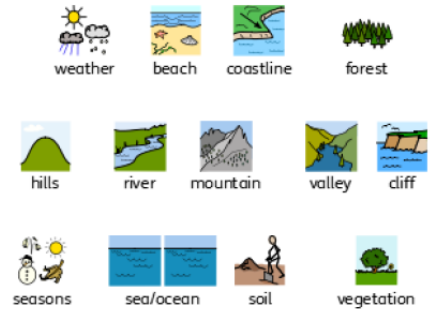


Country	Flag	Capital city	Seas
England		London	The North Sea
Wales		Cardiff	The Irish Sea
Scotland		Edinburgh	The Celtic Sea
Northern Ireland		Belfast	The English Channel

### Human Geographical Features



### Physical Geographical Features



Continents	Oceans
Europe	Arctic Ocean
Africa	Atlantic Ocean
Asia	Pacific Ocean
Australasia	Indian Ocean
North America	Southern Ocean
South America	
Antarctica	

### Key vocabulary

### Definition

Island	A piece of land surrounded by water.
Seaside	A place by the sea, especially with a beach of holiday resort.
British Isles	A group of islands including Great Britain, Ireland and many smaller islands. We live in England which is part of the British Isles.
Beach	A pebbly or sandy shore, usually next to the sea.
Cliff	Tall, steep rocks next to the sea.
Bay	A body of water partially surrounded by land.
Promenade	A path for walking on alongside the sea.
Hotel	A place to stay when you are on holiday.
Pier	A platform which sticks out over the water for people to walk along or get in and out of boat.
Tourist	People who visit a place for pleasure.

**City** - large town that usually has a cathedral  
**Country** – large area of land where people live under the same government  
**Continent** – group of countries on one large expanse of land  
**United Kingdom** – England, Scotland, Wales and Northern Ireland  
**Coast** – the land next to the sea  
**Physical feature** – a feature that has been formed by nature  
**Human feature** – a feature that has been formed made or changed by humans  
**Uninhabitable** – a place that is unsuitable for living